

## What Is The Compliance Date?

- Existing Sources: July 17, 2007.
- New Sources: Upon initial startup.

## What Are The Permitting Requirements?

- This area source category is exempt from Title V.

## What Are the Impacts?

- All existing sources currently operate wood preserving operations consistent with the requirements of the rule.
- The impacts associated with the rule are the cost associated with recordkeeping and reporting (initial notification) requirements, which is estimated to be \$220 for each of the estimated 400 facilities.

## What Records Are Required?

If you use a preservative containing chromium, arsenic, dioxins or methylene chloride, you must do the following:

### Reporting:

- Initial Notification and Notification of Compliance Status (may be combined), due by 10/16/07.
- Initial Notification informs EPA that the facility is subject to the standards. Notification of Compliance Status provides certification of compliance with standards.
- You must report any deviation from the requirements of the rule within 30 days of the deviation.
- No ongoing compliance reports are required beyond Title V Requirements.

### Recordkeeping:

- Records to include copies of notifications submitted to EPA and records of any corrective or preventive measures.
- Records to be maintained in a form suitable and readily available for expeditious review.

You can also contact your Regional EPA air toxics office at the following numbers:

Address	States	Website/ Phone Number
Region 1 1 Congress Street Suite 1100 Boston, MA 02114-2023	CT, MA, ME, NH, RI, VT	<a href="http://www.epa.gov/region1">www.epa.gov/region1</a> (888) 372-7341 (617) 918-1650
Region 2 290 Broadway New York, NY 10007-1866	NJ, NY, PR, VI	<a href="http://www.epa.gov/region2">www.epa.gov/region2</a> (212) 637-4023
Region 3 1650 Arch Street Philadelphia, PA 19103-2029	DE, MD, PA, VA, WV, DC	<a href="http://www.epa.gov/region3">www.epa.gov/region3</a> (215) 814-2068
Region 4 Atlanta Federal Center 61 Forsyth Street, SW Atlanta, GA 30303-8960	FL, NC, SC, KY, TN, GA, AL, MS	<a href="http://www.epa.gov/region4">www.epa.gov/region4</a> (404) 562-9131 (800) 241-1754
Region 5 77 West Jackson Blvd. Chicago, IL 60604-3507	IL, IN, MI, WI, MN, OH	<a href="http://www.epa.gov/region5">www.epa.gov/region5</a> (312) 886-6812 (312) 353-6684 (312) 886-6798
Region 6 1445 Ross Avenue Suite 1200 Dallas, TX 75202-2733	AR, LA, NM, OK, TX	<a href="http://www.epa.gov/region6">www.epa.gov/region6</a> (800) 887-6063 (214) 665-7250 (214) 665-7224
Region 7 901 North Fifth Street Kansas City, KS 66101	IA, KS, MO, NE	<a href="http://www.epa.gov/region7">www.epa.gov/region7</a> (800) 223-0425 (913) 551-7003
Region 8 1595 Wynkoop St. Denver, CO 80202-1129	CO, MT, ND, SD, UT, WY	<a href="http://www.epa.gov/region8">www.epa.gov/region8</a> (800) 227-8917* (303) 312-6460
Region 9 75 Hawthorne Street San Francisco, CA 94105	CA, AZ, HI, NV, GU, AS, MP	<a href="http://www.epa.gov/region9">www.epa.gov/region9</a> (415) 947-8715
Region 10 1200 6 <sup>th</sup> Ave. Suite 900, AWT-107 Seattle, WA 98101	AK, ID, WA, OR	<a href="http://www.epa.gov/region10">www.epa.gov/region10</a> (800) 424-4372* (206) 553-6220

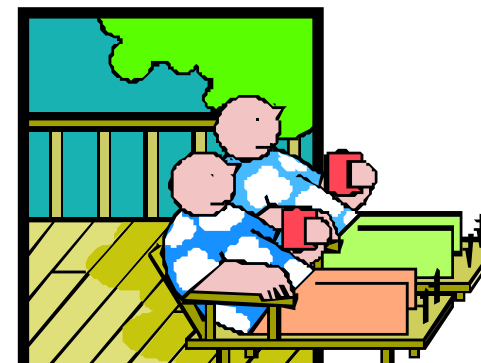
\* For sources within the Region only.

## For More Information

This brochure is a general guide only; review the rule for your specific requirements at: For more information on state requirements, please contact your state representatives at:  
[http://www.epa.gov/ttn/atw/area/table\\_state\\_contacts.doc](http://www.epa.gov/ttn/atw/area/table_state_contacts.doc) or  
<http://www.4cleanair.org/contactUsaLevel.asp>



# Summary of Regulations Controlling Air Emissions from the WOOD PRESERVING INDUSTRY



## NATIONAL EMISSION STANDARDS FOR HAZARDOUS AIR POLLUTANTS NESHAP (SUBPART QQQQQQ) FINAL RULE



# WOOD PRESERVING (SUBPART QQQQQQ)

## What Is An Area Source?

- Any source that is not a major source. (A major source is a facility that emits, or has the potential to emit in the absence of controls, at least 10 tons per year (TPY) of individual hazardous air pollutants (HAP) or 25 TPY of combined HAP.)

## Who Does This Rule Apply To?

- Anyone that owns or operates a wood preserving operation that is an area source of HAP emissions.

## What Am I Required To Do?

### Equipment Requirements

- If you use a pressure treatment process with any wood preservative containing chromium, arsenic, dioxins, or methylene chloride, the preservative must be applied to the wood product inside a retort or similarly enclosed vessel.
- If you use a thermal treatment process with any wood preservative containing chromium, arsenic, dioxins, or methylene chloride, the preservative must be applied using process treatment tanks equipped with an air scavenging system to control emissions.
- Prepare a management practice plan and operate your treatment process according to that plan to minimize air emissions.

The management practice plan must include, but is not limited to, the following activities:

- Minimize preservative usage;
- Maintain records on the type of treatment process and types and amounts of wood preservatives used at the facility;
- For the pressure treatment process, maintain charge records identifying pressure reading(s) inside the retorts (or similarly enclosed vessel);
- For the thermal treatment process, maintain records that the air scavenging system is in place and operated properly during the treatment process;
- Store treated wood product on drip pads or in a primary containment area to convey preservative drippage to a collection system until drippage has ceased;
- For the pressure treatment process, fully drain the retort to the extent practicable, prior to opening the retort door;
- Promptly collect any spills; and
- Perform relevant corrective actions or preventative measures in the event of a malfunction before resuming operations.

### Monitoring Requirements

- There are no monitoring requirements for this rule.

## Regulatory Flowchart

