

LEGEND

- Monument Found, 3/4" pipe or as shown
- Monitoring Well
- On-site Water Supply Well
- Property Line
- Lot Line
- Chain Link Fence
- Measured Distance
- Recorded Distance
- Water Meter
- Fire Hydrant
- Water Valve
- Curb Stop
- Sanitary Sewer Cleanout
- Gas Valve
- Gas Meter
- Telephone Pedestal
- Man Hole
- Power Pole
- Yard Light
- Gas Line
- Overhead Electric Line
- Water Line
- Underground Telephone Line
- Former Underground Storage Tank
- Elevation
- Tree

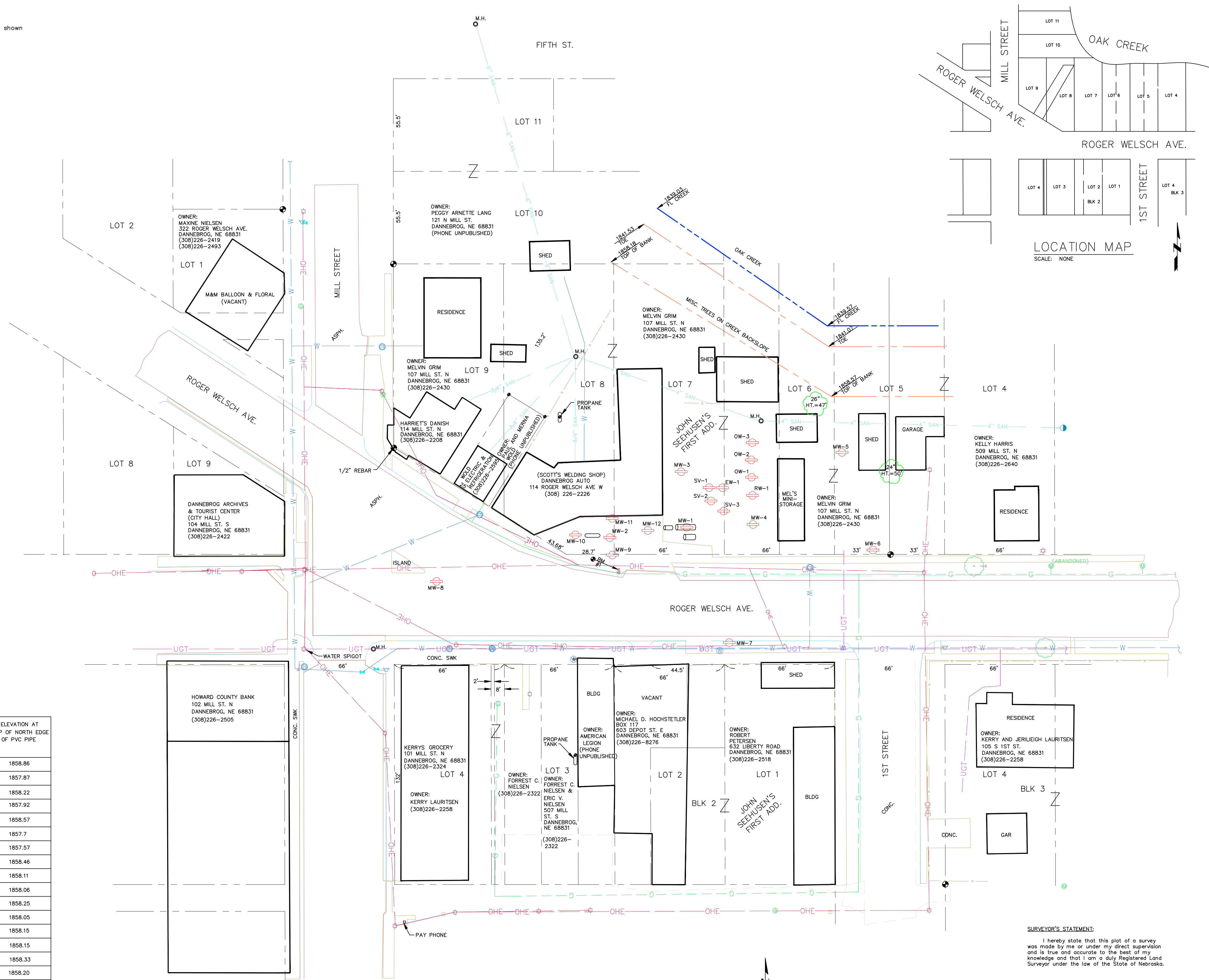
NOTE
Underground utilities shown on this drawing were surveyed from points located in the field from the local utility companies field locators or were compiled from drawings supplied by the local utility companies and public works department, and are shown in their approximate locations. Other underground improvement locations are unknown.

UTILITY CONTACT
ELECTRICITY --- Howard Greeley Rural Public Power District (308) 754-4457
GAS --- Source Gas 1-800-563-0012
TELEPHONE --- Nebraska Central Telephone (402-721-9070)
TELEPHONE --- QWest 1-877-744-4416
WATER AND SAN. SEWER --- Village of Dannebrog (308) 226-2422

BENCH MARK NO. 1:
TOP SE BOLT ON LIGHT POLE 30' SOUTH OF SCOTT'S WELDING SHOP
NORTHING=10,000.00
EASTING = 10,000.00
ELEVATION = 1858.69

NDEO OFFICES
MAIN OFFICE
1200 "N" Street, Suite 400
PO Box 98922
Lincoln, NE 68509
(402)471-2186
FAX (402)471-2909
HOLDREGE OFFICE
1308 2nd Street
Holdrege, NE 68949
(308)995-3942 or (308)995-3944 or (308)995-3150
FAX (308) 995-6992

| MONITORING WELL ID | NORTHING | EASTING | ELEVATION AT GROUND | ELEVATION AT TOP OF NORTH EDGE OF PVC PIPE |
|--------------------|----------|---------|---------------------|--|
| MW-1 | 10025.7 | 10040.8 | 1858.34 | 1858.86 |
| MW-2 | 10019.5 | 9994.7 | 1858.46 | 1857.87 |
| MW-3 | 10059.1 | 10037.4 | 1858.67 | 1858.22 |
| MW-4 | 10027.3 | 10080.8 | 1858.29 | 1857.92 |
| MW-5 | 10070.7 | 10133.9 | 1858.97 | 1858.57 |
| MW-6 | 10012.1 | 10152.3 | 1858.14 | 1857.7 |
| MW-7 | 9956.7 | 10066.1 | 1857.94 | 1857.57 |
| MW-8 | 9993.2 | 9890.7 | 1858.78 | 1858.46 |
| MW-9 | 10009.0 | 9996.2 | 1858.40 | 1858.11 |
| MW-10 | 10021.1 | 9974.0 | 1858.46 | 1858.06 |
| MW-11 | 10031.4 | 9996.3 | 1858.6 | 1858.25 |
| MW-12 | 10023.9 | 10017.7 | 1858.41 | 1858.05 |
| RW-1 | 10044.9 | 10080.3 | 1858.45 | 1858.15 |
| OW-1 | 10055.8 | 10079.8 | 1858.45 | 1858.15 |
| OW-2 | 10066.2 | 10079.7 | 1858.53 | 1858.33 |
| OW-3 | 10076.6 | 10080.1 | 1858.47 | 1858.20 |
| EW-1 | 10049.4 | 10062.4 | 1858.54 | 1858.29 |
| SV-1 | 10049.5 | 10054.3 | 1858.62 | 1858.31 |
| SV-2 | 10041.5 | 10055.4 | 1858.58 | 1858.27 |
| SV-3 | 10035.4 | 10063.1 | 1858.34 | 1857.93 |



This survey was done at the request of RDC Geoscience & Engineering, Inc. 10360 Sapp Brothers Drive, Omaha, NE 68138

TOPOGRAPHIC SURVEY

SURVEYOR'S STATEMENT:
I hereby state that this plot of a survey was made by me or under my direct supervision and is true and accurate to the best of my knowledge and that I am a duly Registered Land Surveyor under the law of the State of Nebraska.

Jeffrey S. Ryan, R.L.S. 541
(402)371-6416 office
(402)649-6865 cell