

LEGEND

- Monument Found, As Shown
- Manhole
- Lot Line
- Sanitary Sewer Line
- Power Pole
- Monitoring Well
- Guy Wire
- Former Underground Storage Tank Location
- Overhead Electric Line
- Light Pole
- Water Line
- Fire Hydrant
- Gas Line
- Gas Meter
- Bench Mark
- Elec. Pedestal
- Sign
- Storm Sewer Inlet
- Telephone Pedestal
- Curb Stop
- Underground Telephone Line

MONITORING WELL ID	NORTHING	EASTING	ELEVATION AT TOP OF MONITORING WELL CAP	ELEVATION AT TOP OF NORTH EDGE OF PVC PIPE
OW-1	498.78	526.87	1471.99	1471.55
OW-2	518.52	549.72	1472.27	1471.87
RW-1	501.70	535.96	1472.22	1471.93
SV-1 (18)	663.18	517.52	1472.83	1473.03
SV-1 (33)	663.18	517.52	1472.83	1472.83
SV-2 (18)	659.23	508.28	1473.01	1472.70
SV-2 (33)	659.23	508.28	1472.73	1472.73
SV-3 (18)	660.07	547.72	1473.01	1472.41
SV-3 (33)	660.07	547.72	1472.67	1472.21
EW-1	682.00	523.64	1472.65	1472.25
EW-2	682.54	517.09	1472.71	1472.13
MW-1	658.87	523.65	1473.08	1472.86
MW-2	688.46	608.02	1472.41	1472.41
MW-3	697.21	616.91	1472.58	1472.29
MW-4	655.26	727.74	1471.65	1471.41
MW-5	549.01	605.37	1472.90	1472.66
MW-6	651.23	668.24	1471.87	1471.39
MW-7	775.31	661.91	1472.88	1472.62
MW-8	682.69	478.85	1473.34	1472.96
MW-9	659.69	572.59	1472.67	1472.35
MW-10	708.75	672.42	1472.36	1471.89
MW-11	605.22	504.98	1472.95	1472.61
MW-12	534.91	518.36	1472.27	1471.98
MW-13	717.89	479.74	1473.54	1473.58
MW-14	664.48	447.07	1473.87	1473.27
MW-15	562.56	429.80	1472.81	1472.51
MW-16	658.93	401.81	1473.81	1473.52
MW-17	809.69	290.10	1475.39	1475.04
MW-18	790.99	473.44	1474.20	1473.68
MW-19	825.99	603.49	1473.25	1472.95
MW-20	826.04	704.29	1473.12	1472.72
MW-21	776.02	761.81	1472.86	1472.56
MW-22	685.85	817.50	1471.84	1471.44
MW-23	611.90	848.87	1471.59	1471.17
MW-24	523.02	794.05	1472.13	1471.81
MW-25	448.54	666.95	1472.65	1472.12
MW-26	760.67	882.32	1472.96	1471.75
MW-27	635.51	933.15	1471.93	1471.50

BENCH MARK:
BRASS CAP, STANTON 1934 NAVD 88
ELEV. 1478.14

UTILITY CONTACTS:

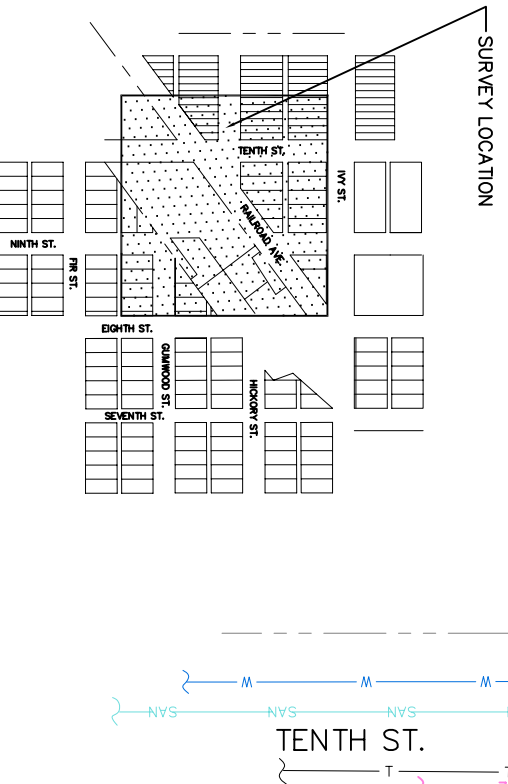
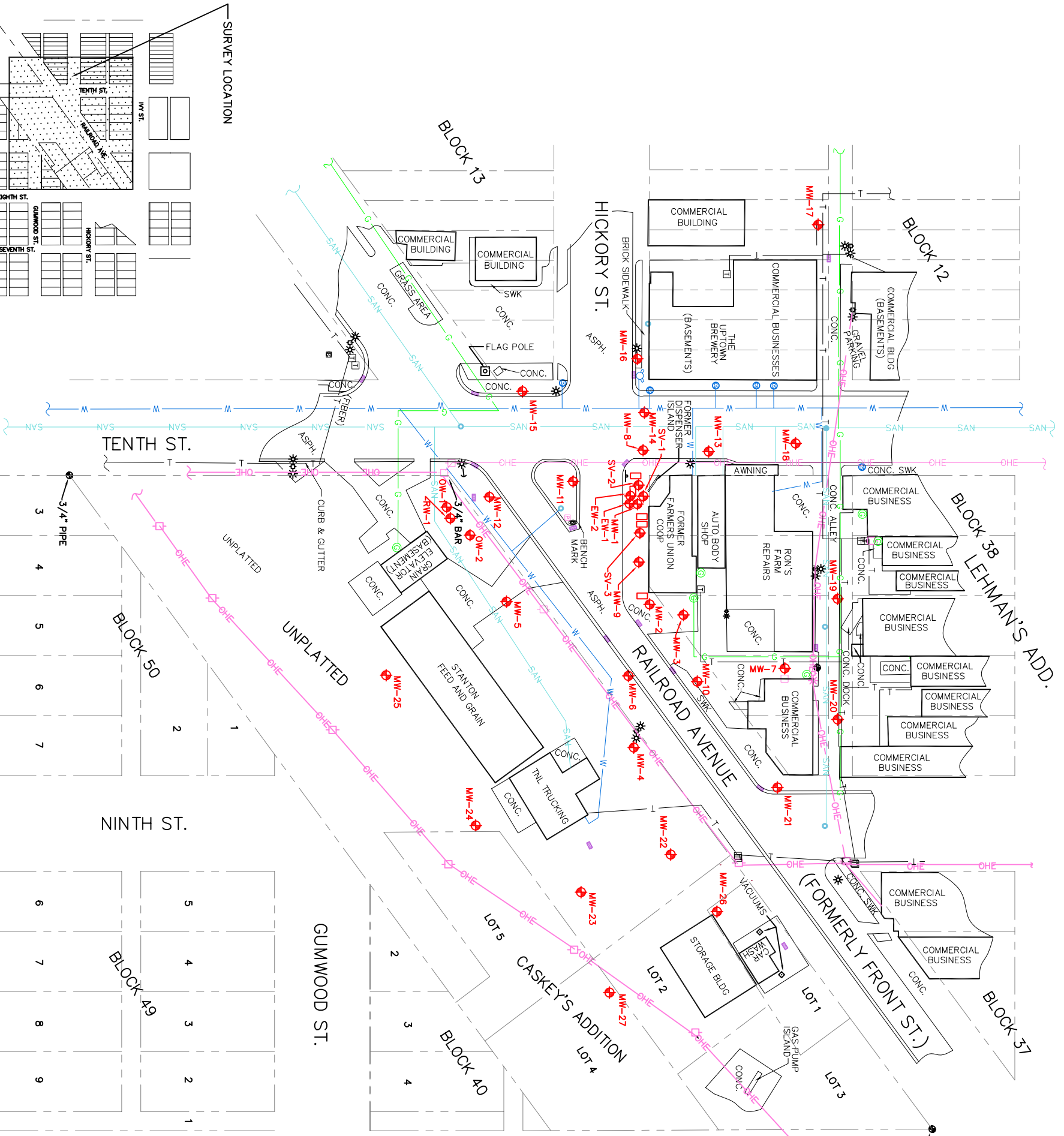
Gas
Aquila
Phone: 1-800-303-0752

Water and Sewer
City of Stanton (Shop)
Phone: (402)439-2218
1101 Elm St.
P.O. Box 347
Stanton, NE 68779

Electricity

Stanton County Public Power District
Phone: (402) 439-2228
807 Douglas St.
P.O. Box 319
Stanton, NE 68779
Telephone

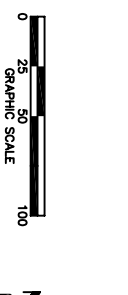
Stanton Telecom, Inc.
Phone: (402)439-2284
1004 Ivy St.
P.O. Box 716
Stanton, NE 68779



LOCATION MAP

This survey was done at the request of
RDG GEO Science & Engineering
10360 Sapp Brothers Drive
Omaha, NE 68135

TOPOGRAPHIC SURVEY



DATE	DRAWN BY
1-07-05	KSL
PROJECT NO.	BELING GROUP
557/SU2	001
SCALE	1" = 50'
FIELD BOOK	
FILE NAME	557SU2
REVISION	
REVISION	
REVISION	
REVISION	
REVISION	
REVISION	
REVISION	
SHEET	1 of 1