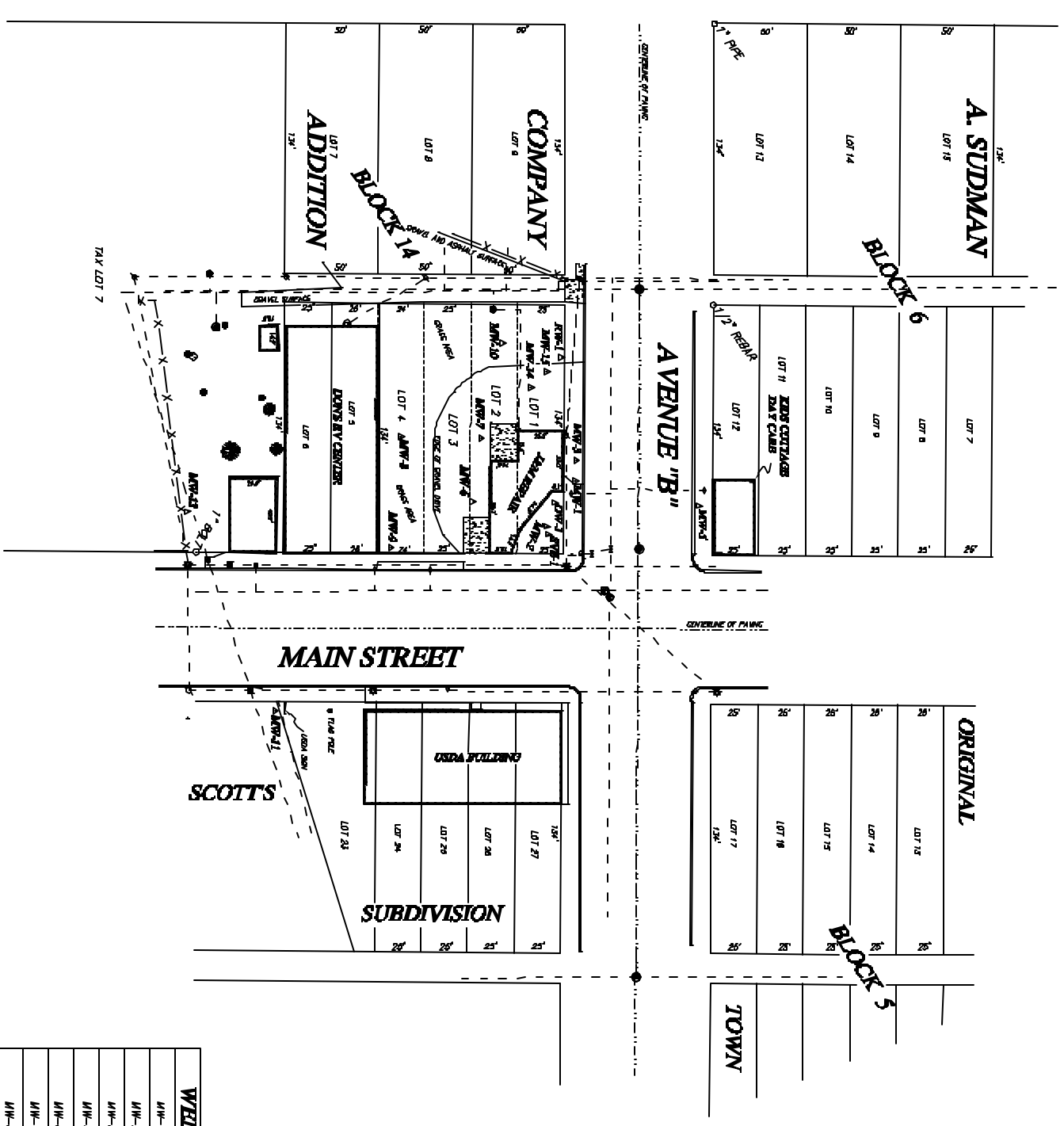


A SITE DIAGRAM OF J&M AUTO REPAIR LOCATED IN OSHKOSH, GARDEN COUNTY, NEBRASKA

PREPARED FOR TERRACON CONSULTING ENGINEERS & SCIENTISTS OF OMAHA, NEBRASKA
PROJECT NO. 40997265



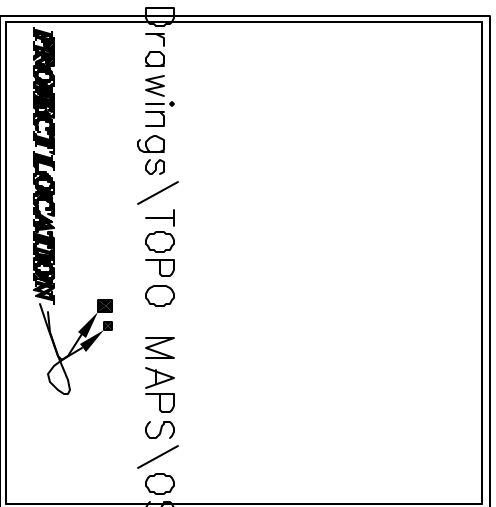
SURVEYOR'S NOTES:

THE BENCHMARK USED FOR CONTROL OF ELEVATIONS WAS DERIVED BY THE COAST AND GEODETIC SURVEY IN 1934, LOCATED AT THE WEST ENTRANCE OF THE GARDEN COUNTY COURT HOUSE LOCATED IN OSHKOSH, NEBRASKA. IT IS A BRASS CAP STAMPED "7.32 1934" NOW IN A NEWLY POURED CONCRETE SIDEWALK ALONG THE BUILDING WEST OF THE WEST WALL AND 3/4" NORTH OF THE STAIRS LEADING INTO THE WEST ENTRANCE. DATUM USED IS NAVD 88 WITH A ELEVATION OF 3397.12 FEET.

A NEW BENCHMARK WAS SET ON SITE AT THE NW CORNER OF AN EXISTING FIRE HYDRANT LOCATED AT THE SW CORNER OF THE INTERSECTION OF AVENUE "B" AND MAIN STREET. THE ELEVATION OF THIS NEW BENCHMARK IS 3390.75 FEET. ALL ELEVATIONS LISTED IN THE WELL TABLE BELOW ARE RELATIVE THERETO.

THE LEGAL DESCRIPTION FOR THIS PROPERTY WAS FOUND IN DEED BOOK 34, PAGE 457, DESCRIBED AS FOLLOWS: LOTS 1,2,3 AND THE NORTH 24 FEET OF LOT 4 IN BLOCK 14, A SUDDMAN COMPANY ADDITION TO THE CITY OF OSHKOSH, GARDEN COUNTY, NEBRASKA

VICINITY SKETCH

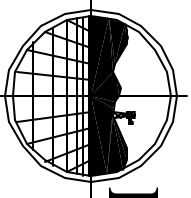


WELL	TOP OF CASTING	LID OF CASTING
NW-1	ELEV. = 3398.07	ELEV. = 3398.80
NW-2	ELEV. = 3398.25	ELEV. = 3398.00
NW-3	ELEV. = 3397.78	ELEV. = 3398.27
NW-5	ELEV. = 3398.71	ELEV. = 3398.07
NW-6	ELEV. = 3398.79	ELEV. = 3398.00
NW-7	ELEV. = 3398.76	ELEV. = 3398.96
NW-8	ELEV. = 3398.72	ELEV. = 3398.83
NW-9	ELEV. = 3398.81	ELEV. = 3398.82
NW-10	ELEV. = 3398.77	ELEV. = 3398.98
NW-11	ELEV. = 3398.43	ELEV. = 3398.89
NW-13	ELEV. = 3398.77	ELEV. = 3398.04
NW-14	ELEV. = 3398.89	ELEV. = 3398.03
NW-15	ELEV. = 3398.84	ELEV. = 3398.06
NW-1	ELEV. = 3398.88	ELEV. = 3398.16
OW-1	ELEV. = 3398.84	ELEV. = 3398.95
SW-1	ELEV. = 3398.78	ELEV. = 3398.88

SURVEYOR'S CERTIFICATE

I do hereby certify that under my personal supervision, this plan was prepared from an actual survey completed this 31st day of August, 2004, and is correct to the best of my knowledge.

John E. Dickinson, Registered Land Surveyor
Nebraska Reg. No. 374



DICKINSON LAND SURVEYORS

P.O. BOX 283, OGALLALA, NEBRASKA
OFFICE-308-284-8440 CELL-308-289-1485

C:\2004 Drawings\TOPO MAPS\OSHKOSH