

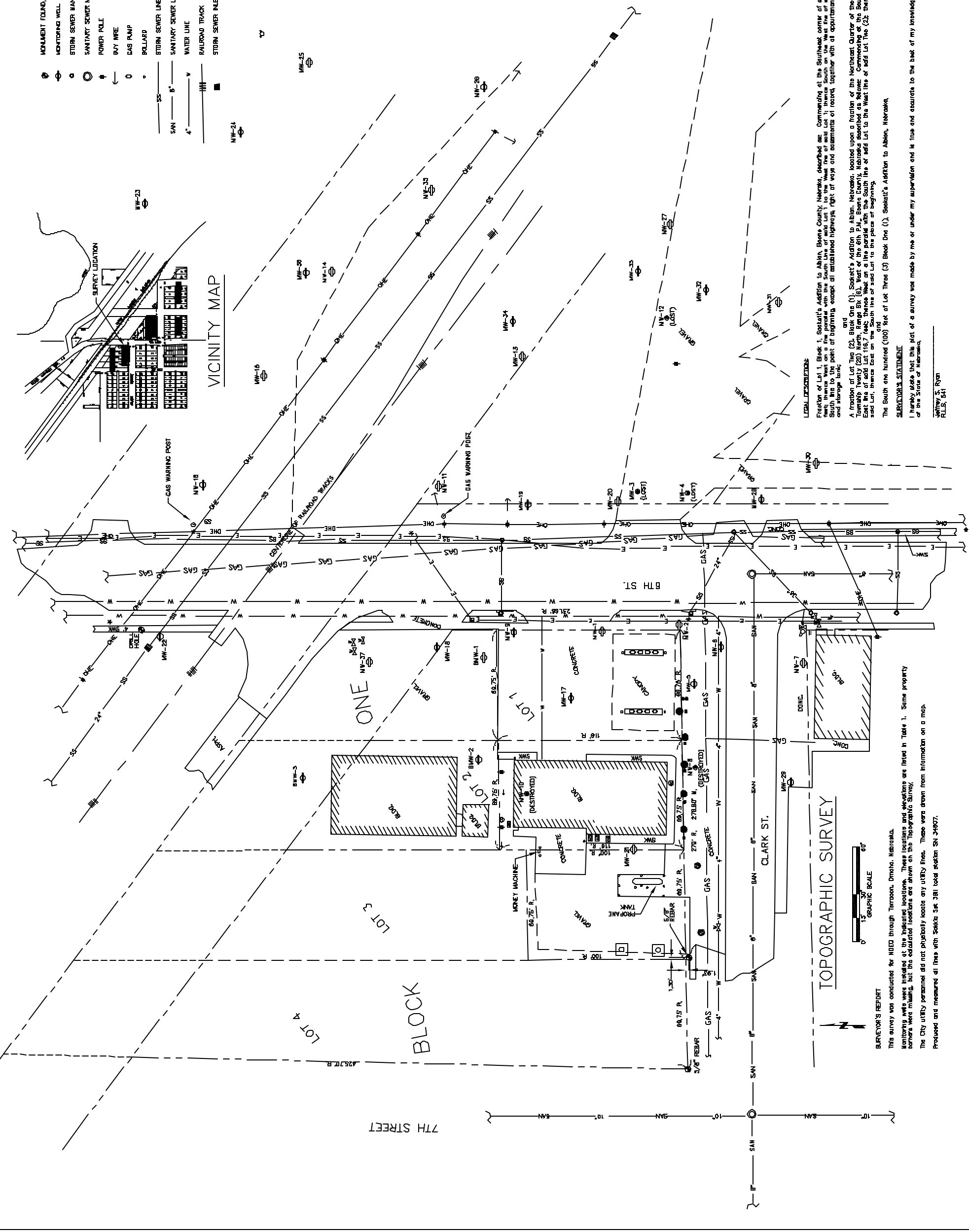
DATE	BY	REVISION
05/14/08	JFO	INITIAL DRAFT
05/14/08	JFO	FINAL DRAFT
05/14/08	JFO	AS SHOWN
FIELD BOOK	ALPHONSO J.	
FIELD NAME	ALPHONSO J.	
AUTHORITY	ALPHONSO J.	
COPYRIGHT	ALPHONSO J.	
PROJECT BY	ALPHONSO J.	
CHECKED BY	ALPHONSO J.	

- LEGEND**
- MONUMENT FOUND, AS NOTED
 - MONITORING WELL
 - STORM SEWER MANHOLE
 - SANITARY SEWER MANHOLE
 - POWER POLE
 - GUY WIRE
 - GAS RAMP
 - ROLLTOP
 - STORM SEWER LINE
 - SANITARY SEWER LINE
 - WATER LINE
 - RAILROAD TRACK
 - STORM SEWER INLET
 - AIR CONDITIONER
 - LIGHT POLE
 - VACUUM
 - WATER VALVE
 - CURB STOP
 - FIRE HYDRANT
 - UNDERGROUND FUEL TANK LIQ
 - GAS LINE
 - UNDERGROUND ELEC. LINE
 - CLEAN OUT
 - POWER BOX
 - OVERHEAD ELECTRIC LINE
 - PROPERTY LINE
 - EDGE OF GRAVEL SURFACE

TABLE 1

MONUMENT	EASTING	NORTHING	ELEVATION TO TOP OF MONUMENT	ELEVATION TO TOP OF BENCH MARK
BM-1	1786.099	4997.937	1703.44	1703.2
BM-2	1786.099	4997.937	1703.44	1703.2
BM-3	1786.099	4997.937	1703.44	1703.2
BM-4	1786.099	4997.937	1703.44	1703.2
BM-5	1786.099	4997.937	1703.44	1703.2
BM-6	1786.099	4997.937	1703.44	1703.2
BM-7	1786.099	4997.937	1703.44	1703.2
BM-8	1786.099	4997.937	1703.44	1703.2
BM-9	1786.099	4997.937	1703.44	1703.2
BM-10	1786.099	4997.937	1703.44	1703.2
BM-11	1786.099	4997.937	1703.44	1703.2
BM-12	1786.099	4997.937	1703.44	1703.2
BM-13	1786.099	4997.937	1703.44	1703.2
BM-14	1786.099	4997.937	1703.44	1703.2
BM-15	1786.099	4997.937	1703.44	1703.2
BM-16	1786.099	4997.937	1703.44	1703.2
BM-17	1786.099	4997.937	1703.44	1703.2
BM-18	1786.099	4997.937	1703.44	1703.2
BM-19	1786.099	4997.937	1703.44	1703.2
BM-20	1786.099	4997.937	1703.44	1703.2
BM-21	1786.099	4997.937	1703.44	1703.2
BM-22	1786.099	4997.937	1703.44	1703.2
BM-23	1786.099	4997.937	1703.44	1703.2
BM-24	1786.099	4997.937	1703.44	1703.2
BM-25	1786.099	4997.937	1703.44	1703.2
BM-26	1786.099	4997.937	1703.44	1703.2
BM-27	1786.099	4997.937	1703.44	1703.2
BM-28	1786.099	4997.937	1703.44	1703.2
BM-29	1786.099	4997.937	1703.44	1703.2
BM-30	1786.099	4997.937	1703.44	1703.2
BM-31	1786.099	4997.937	1703.44	1703.2
BM-32	1786.099	4997.937	1703.44	1703.2
BM-33	1786.099	4997.937	1703.44	1703.2
BM-34	1786.099	4997.937	1703.44	1703.2
BM-35	1786.099	4997.937	1703.44	1703.2
BM-36	1786.099	4997.937	1703.44	1703.2
BM-37	1786.099	4997.937	1703.44	1703.2
BM-38	1786.099	4997.937	1703.44	1703.2
BM-39	1786.099	4997.937	1703.44	1703.2
BM-40	1786.099	4997.937	1703.44	1703.2
BM-41	1786.099	4997.937	1703.44	1703.2
BM-42	1786.099	4997.937	1703.44	1703.2
BM-43	1786.099	4997.937	1703.44	1703.2
BM-44	1786.099	4997.937	1703.44	1703.2
BM-45	1786.099	4997.937	1703.44	1703.2
BM-46	1786.099	4997.937	1703.44	1703.2
BM-47	1786.099	4997.937	1703.44	1703.2
BM-48	1786.099	4997.937	1703.44	1703.2
BM-49	1786.099	4997.937	1703.44	1703.2
BM-50	1786.099	4997.937	1703.44	1703.2
BM-51	1786.099	4997.937	1703.44	1703.2
BM-52	1786.099	4997.937	1703.44	1703.2
BM-53	1786.099	4997.937	1703.44	1703.2
BM-54	1786.099	4997.937	1703.44	1703.2
BM-55	1786.099	4997.937	1703.44	1703.2
BM-56	1786.099	4997.937	1703.44	1703.2
BM-57	1786.099	4997.937	1703.44	1703.2
BM-58	1786.099	4997.937	1703.44	1703.2
BM-59	1786.099	4997.937	1703.44	1703.2
BM-60	1786.099	4997.937	1703.44	1703.2
BM-61	1786.099	4997.937	1703.44	1703.2
BM-62	1786.099	4997.937	1703.44	1703.2
BM-63	1786.099	4997.937	1703.44	1703.2
BM-64	1786.099	4997.937	1703.44	1703.2
BM-65	1786.099	4997.937	1703.44	1703.2
BM-66	1786.099	4997.937	1703.44	1703.2
BM-67	1786.099	4997.937	1703.44	1703.2
BM-68	1786.099	4997.937	1703.44	1703.2
BM-69	1786.099	4997.937	1703.44	1703.2
BM-70	1786.099	4997.937	1703.44	1703.2
BM-71	1786.099	4997.937	1703.44	1703.2
BM-72	1786.099	4997.937	1703.44	1703.2
BM-73	1786.099	4997.937	1703.44	1703.2
BM-74	1786.099	4997.937	1703.44	1703.2
BM-75	1786.099	4997.937	1703.44	1703.2
BM-76	1786.099	4997.937	1703.44	1703.2
BM-77	1786.099	4997.937	1703.44	1703.2
BM-78	1786.099	4997.937	1703.44	1703.2
BM-79	1786.099	4997.937	1703.44	1703.2
BM-80	1786.099	4997.937	1703.44	1703.2
BM-81	1786.099	4997.937	1703.44	1703.2
BM-82	1786.099	4997.937	1703.44	1703.2
BM-83	1786.099	4997.937	1703.44	1703.2
BM-84	1786.099	4997.937	1703.44	1703.2
BM-85	1786.099	4997.937	1703.44	1703.2
BM-86	1786.099	4997.937	1703.44	1703.2
BM-87	1786.099	4997.937	1703.44	1703.2
BM-88	1786.099	4997.937	1703.44	1703.2
BM-89	1786.099	4997.937	1703.44	1703.2
BM-90	1786.099	4997.937	1703.44	1703.2
BM-91	1786.099	4997.937	1703.44	1703.2
BM-92	1786.099	4997.937	1703.44	1703.2
BM-93	1786.099	4997.937	1703.44	1703.2
BM-94	1786.099	4997.937	1703.44	1703.2
BM-95	1786.099	4997.937	1703.44	1703.2
BM-96	1786.099	4997.937	1703.44	1703.2
BM-97	1786.099	4997.937	1703.44	1703.2
BM-98	1786.099	4997.937	1703.44	1703.2
BM-99	1786.099	4997.937	1703.44	1703.2
BM-100	1786.099	4997.937	1703.44	1703.2

BENCH MARK
 114 IN. TIE IN FIRE HYDRANT AT NE CORNER OF 7th STREET
 AND MONUMENT
 Elev. 1761.71



LEGAL DESCRIPTION

Fraction of Lot 1, Block 1, Sackett's Addition to Albion, Boone County, Nebraska, described as: Commencing at the Southeast corner of said Lot 1, running thence North on the East line of said Lot 1; thence South on the West line of said Lot 1 to the Southwest corner of said Lot 1; thence East on the East line of said Lot 1 to the point of beginning, except of established highway, right of way and easements of record, together with all appurtenances and equipment attached to said real estate, said oil pump and storage tank, and

A fraction of Lot Two (2), Block One (1), Sackett's Addition to Albion, Nebraska, located upon a fraction of the Northeast Quarter of the Northeast Quarter (NE1/4NE1/4) of Section Twenty-one (21), Township Twenty (20) North, Range Six (6), West of the 6th P.M., Boone County, Nebraska described as follows: Commencing at the Southeast corner of said Lot Two (2), running thence North on the East line of said Lot Two (2) to the point of beginning, except of established highway, right of way and easements of record, together with all appurtenances and equipment attached to said real estate, said oil pump and storage tank, and

The South one hundred (100) feet of Lot Three (3) Block One (1), Sackett's Addition to Albion, Nebraska.

SURVEYOR'S STATEMENT

I hereby state that this plan of a survey was made by me or under my supervision and is true and accurate to the best of my knowledge and that I am a duly Registered Land Surveyor under the laws of the State of Nebraska.

Matthew S. Ryan
 P.L.S. 641

SURVEYOR'S REPORT

This survey was conducted for NICO through Torrison, Omaha, Nebraska. Monitoring wells were installed at the indicated locations. These locations and elevations are listed in Table 1. Some property corners were missing, but the calculated locations are shown on the Topographic Survey. The City Utility Department did not physically locate any utility lines. These were drawn from information on a map. Produced and measured all lines with Sokkia SRT 381 total station SN 34987.