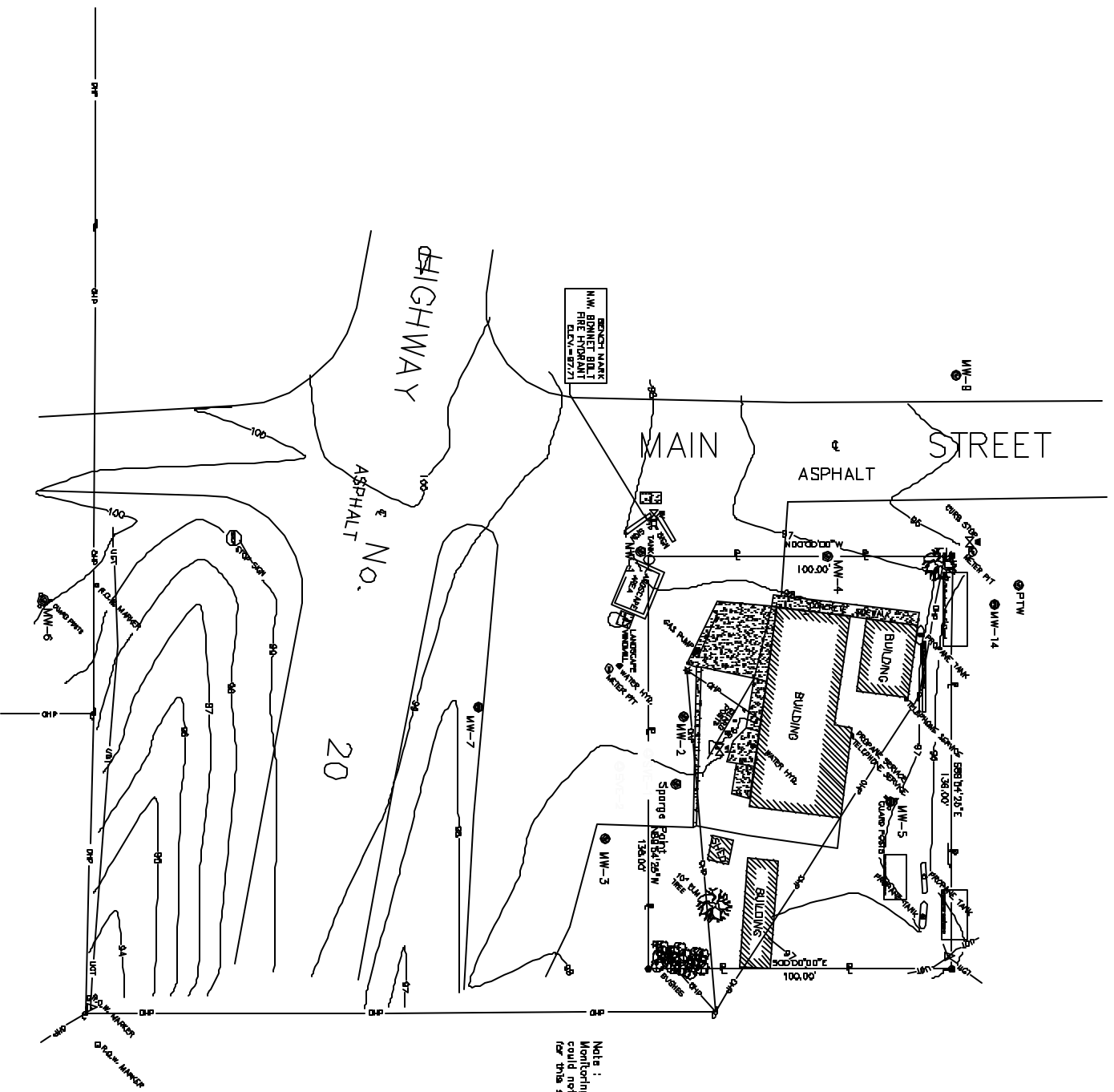


TOPOGRAPHIC SURVEY MAP

of Lots 6 & 7, Block 1, Pioneer Township
and Land Company's 1st Addition to Wood Lake,
Cherry County, Nebraska



Note: Well No. B
Marking Well No. B
Found for this survey.



SCALE: 1" = 20'

Graphic Scale
1" = 20'

- Corner Set 1.5/8" x 3/4" rebar
- with Florida L.S. Cap
- Marking Nail
- 5/8" x 3/4" rebar
- Meter Pit
- Water Valve
- Well Hydrant
- Fire Hydrant
- Overhead Power Line(s)
- Power Pole
- Light Pole
- Telephone Pole(s) (As Per Legend)
- ▲ Telephone Pole(s)
- Right-of-Way Marker
- Concrete Footing
- Asphalt Footing

POINT #	NORTHING	EASTING	ELEV.	RAW DESC.
1	10000.0000	20000.0000	0.0	GLASS STREET
2	11544.2000	20000.0000	98.00	GLASS STREET
3	9987.2000	20038.5258	98.00	MW-1
4	9987.2000	20082.8769	97.88	MW-2
5	10089.2173	20043.0318	96.38	MW-4
6	10089.2173	20054.7452	1102.73	MW-5
7	9945.6788	20089.7882	97.61	MW-7
8	10101.1811	19982.8744	95.02	MW-10
10	10101.1811	20048.0131	95.02	MW-10
11	9888.8888	20104.8888	97.71	MW-11
12	9888.8888	20104.8115	97.71	MW-12
13	10028.2828	20115.0134	98.30	MW-13
14	1013.8887	20069.0015	98.28	MW-14
16	9988.8350	20038.8999	0.0	SW PRD/COR
17	9988.8350	20073.8999	0.0	SE PRD/COR
18	10098.3360	20038.8999	0.0	NW PRD/COR
19	10098.3360	20073.8999	0.0	NE PRD/COR
20	10098.3360	20175.0108	0.0	COR BLDG
21	10098.0989	20082.8769	0.0	COR BLDG
22	10098.0989	20089.0048	0.0	COR BLDG
23	10041.8271	20068.8843	0.0	COR BLDG
24	10041.8271	20122.6870	0.0	COR BLDG
25	10032.6128	20138.4811	0.0	COR BLDG
26	10028.6820	20175.2188	0.0	COR BLDG
27	10027.4899	20132.0181	0.0	COR BLDG
28	10027.4899	20132.0181	0.0	COR BLDG
29	10013.1920	20142.2341	0.0	COR BLDG

SURVEYOR'S CERTIFICATE

I, Timothy A. Harmon, a Nebraska Registered Land Surveyor, hereby certify that the release of Geographical Services, Inc., Omaha, Nebraska, I have advised to be made a Topographic Survey of Lots 6 & 7, Block 1, Pioneer Township and Land Company's 1st Addition to Wood Lake, Cherry County, Nebraska, and that the accompanying Topographic Survey Map, drawn to a scale of 20 feet to the inch, is a true and correct representation of the actual survey, and that my knowledge and belief are true and correct, and to the best of my knowledge and belief on this day of October, 2002.

Timothy A. Harmon
Nebraska Registered Land Surveyor No. 481

